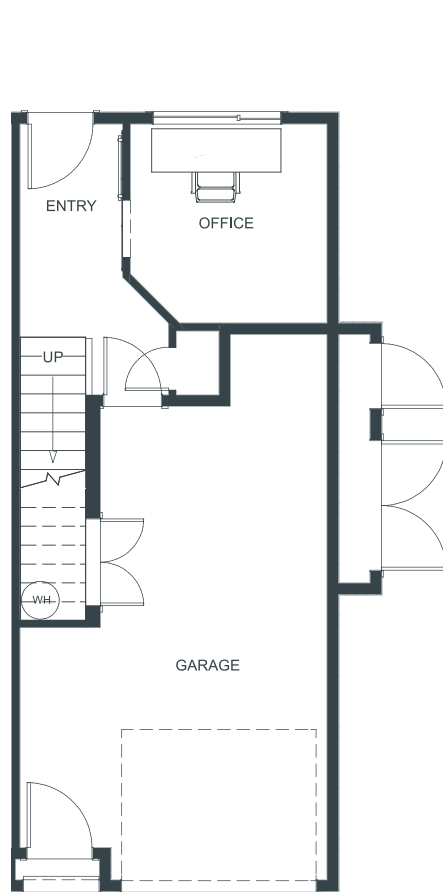


# THE WALK

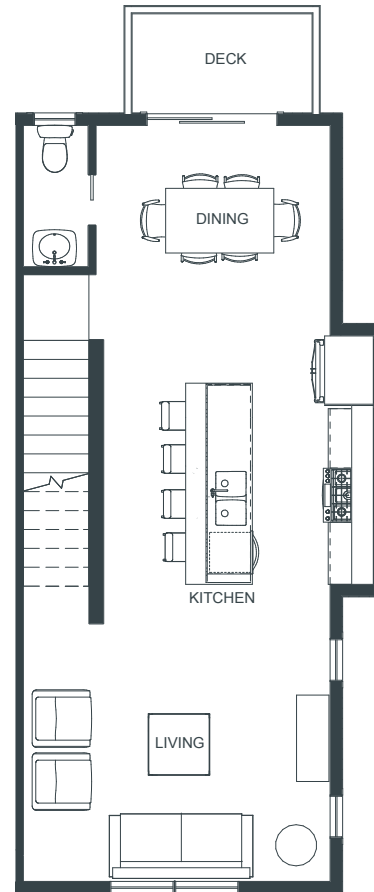
thewalkkamloops.com

# 117

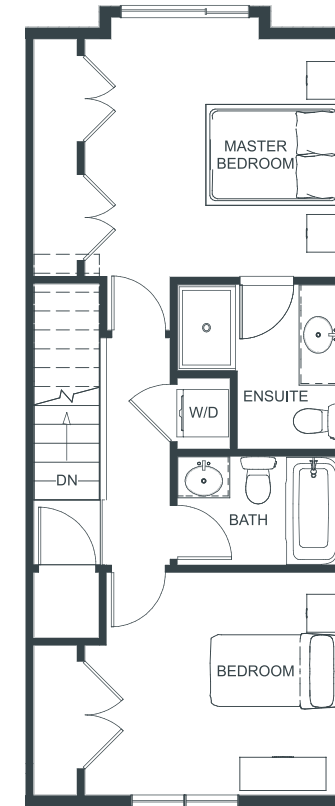
2 Bedroom + Office 1,214 SF



**BASEMENT**  
192 SF | Garage 279 SF



**MAIN LEVEL**  
520 SF



**UPPER LEVEL**  
502 SF



Mike Mitchell (PREC)  
mikemitchell@royallepage.ca

Nolan Pastoor (PREC)  
nolanpastoor@royallepage.ca

In the interest of maintaining the standard of this project, Fulcrum Development reserves the right to make modifications and changes. Sizes and/or dimensions may vary from the actual survey. Measurements are approximate and should be verified.

Another quality project by

