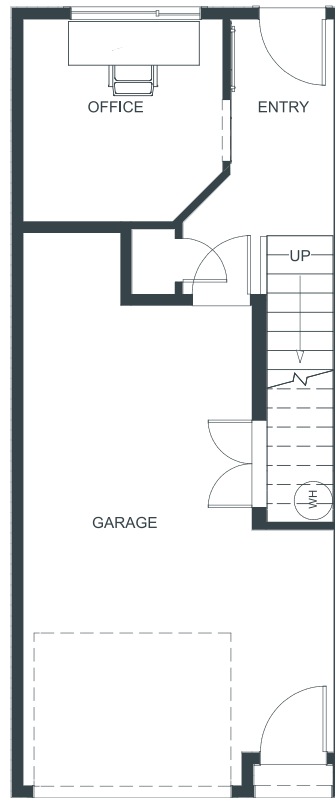


THE WALK

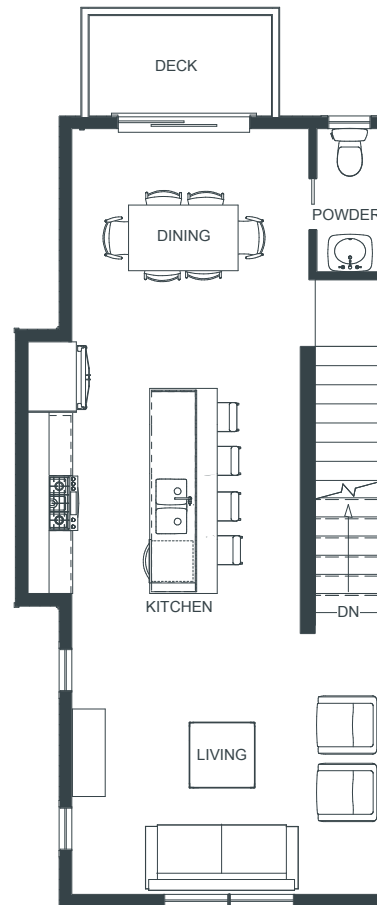
thewalkkamloops.com

116

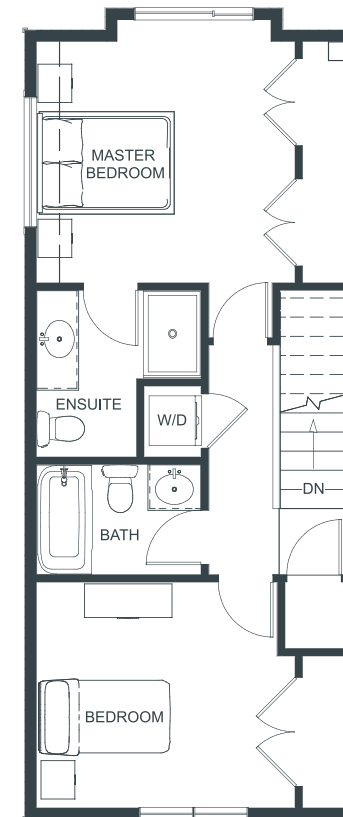
2 Bedroom + Office 1,212 SF



BASEMENT
195 SF | Garage 276 SF



MAIN LEVEL
519 SF



UPPER LEVEL
498 SF



Mike Mitchell (PREC)
mikemitchell@royallepage.ca

Nolan Pastoor (PREC)
nolanpastoor@royallepage.ca

In the interest of maintaining the standard of this project, Fulcrum Development reserves the right to make modifications and changes. Sizes and/or dimensions may vary from the actual survey. Measurements are approximate and should be verified.

Another quality project by

