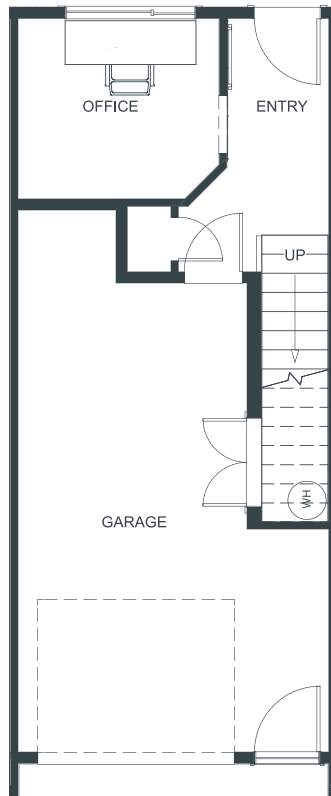


THE WALK

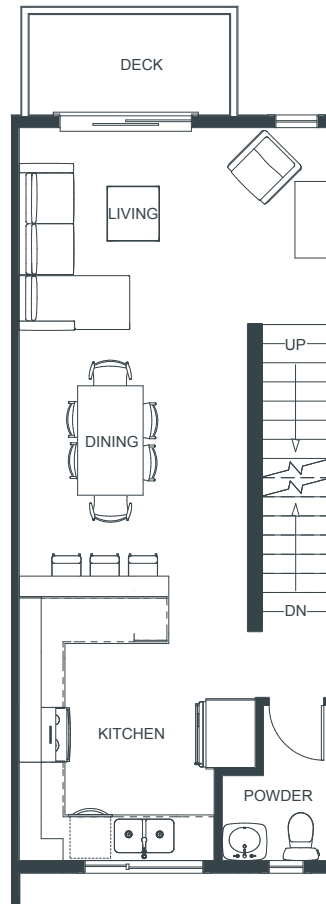
thewalkkamloops.com

115

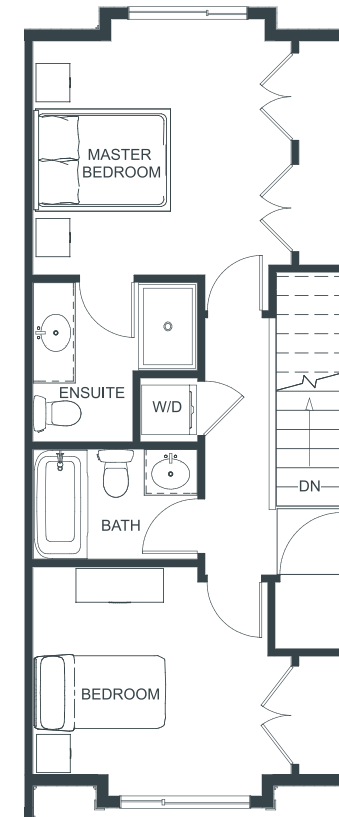
2 Bedroom + Office 1,146 SF



BASEMENT
183 SF | Garage 274 SF



MAIN LEVEL
475 SF



UPPER LEVEL
488 SF



Mike Mitchell (PREC)
mikemitchell@royallepage.ca

Nolan Pastoor (PREC)
nolanpastoor@royallepage.ca

In the interest of maintaining the standard of this project, Fulcrum Development reserves the right to make modifications and changes. Sizes and/or dimensions may vary from the actual survey. Measurements are approximate and should be verified.

Another quality project by

