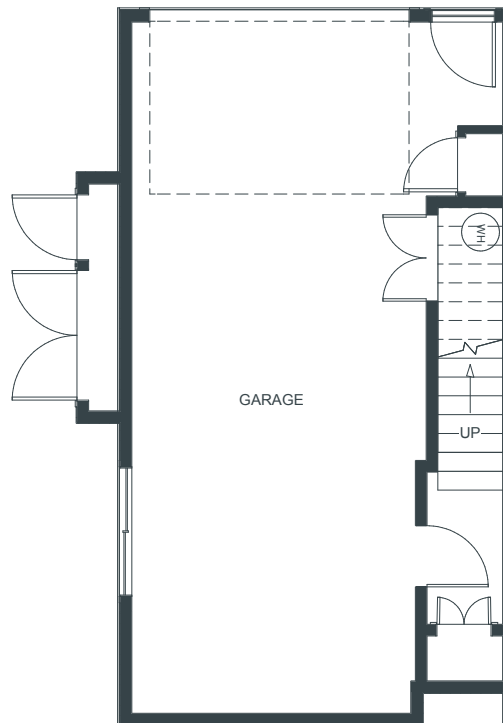


# THE WALK

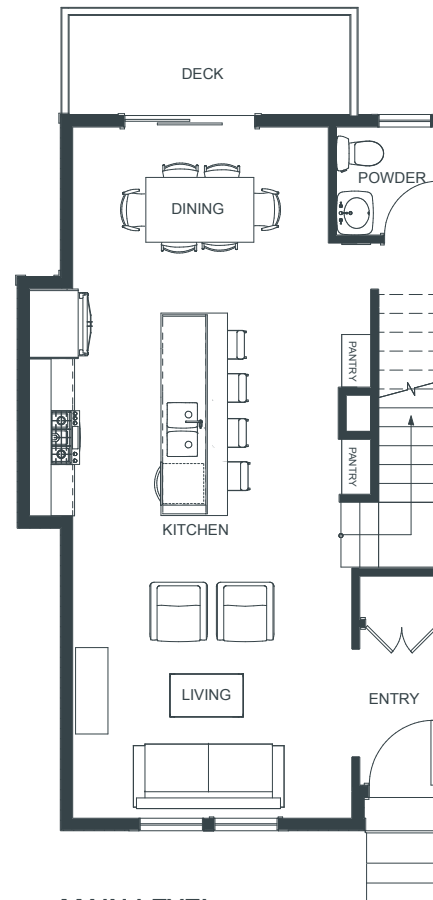
thewalkkamloops.com

# 108

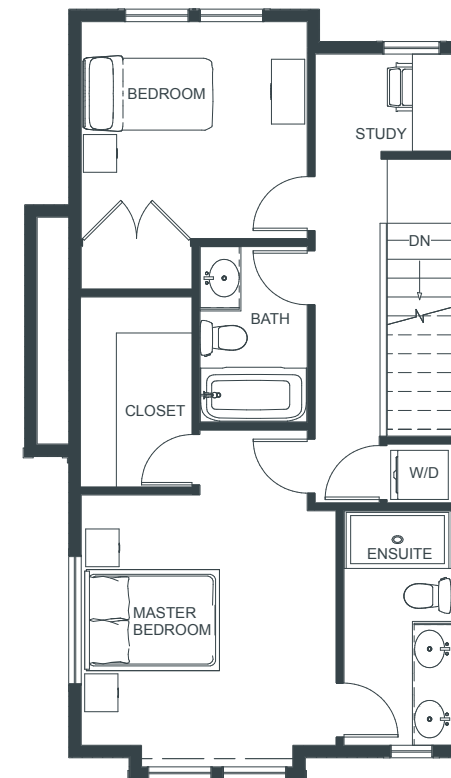
2 Bedroom + Study 1,216 SF



**BASEMENT**  
77 SF | Garage 452 SF



**MAIN LEVEL**  
566 SF



**UPPER LEVEL**  
573 SF



Mike Mitchell (PREC)  
mikemitchell@royallepage.ca

Nolan Pastoor (PREC)  
nolanpastoor@royallepage.ca

In the interest of maintaining the standard of this project, Fulcrum Development reserves the right to make modifications and changes. Sizes and/or dimensions may vary from the actual survey. Measurements are approximate and should be verified.

Another quality project by

